

Historic, archived document

Do not assume content reflects current scientific knowledge, policies, or practices.

J. E. SWEDBERG,
Manager

SERVICE and QUALITY

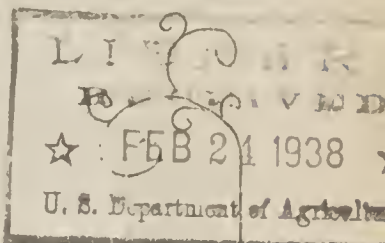
ARVID N. SWEDBERG,
Landscape Architect

1915 For 23 Years. 1938

SWEDBERG NURSERY

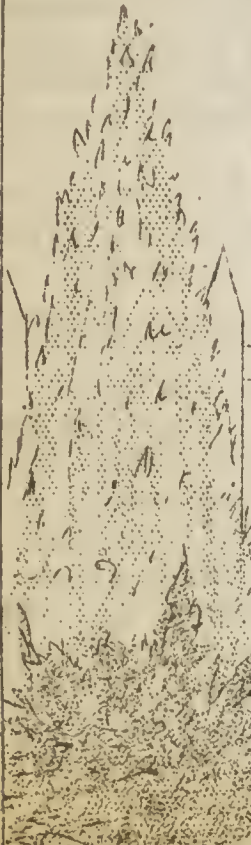
Northern Growers
of
HARDY STATE INSPECTED NURSERY STOCK

BATTLE LAKE, MINNESOTA
Ottertail "The Lake Region" County



TO OLD CUSTOMERS: Thank you again for your orders of the past years. Due to the splendid rainfall last summer we are able to offer you plants this year as nice and full of growing energy as you every laid your eyes on.

TO NEW CUSTOMERS: Year after year our old customers send new orders. These repeat orders mean one thing and that is that our Nursery Stock MUST be good. Stock for our Mail Orders is selected carefully and for this reason we GUARANTEE that all nursery stock purchased from us will reach you in good, live growing condition. If it does not, notify us AT ONCE ON RECEIPT OF THE STOCK and we will REPLACE FREE OF CHARGE. If any stock should fail to grow or should die during the summer, report NOT LATER THAN AUGUST 1, 1938 and we will make adjustments according to your report of PLANTING, CARE, & WEATHER CONDITIONS and kinds of Nursery Stock planted. A GOOD PLANTER has GOOD RESULTS.



7 APPLES		7 CRABS	
2 Anoka 3 to 4ft.	1 Dolgo 3 to 4 ft.	2 Whitney ONLY	
3 Wealthy ONLY		3 Florence	\$2.55
2 Haralson	\$2.55	1 Minnesota	\$2.55
7 PLUMS		7 CHERRIES	
2 Waneta 3 to 4ft.	1 Oka 3 to 4ft.	2 Compass ONLY	
1 Feibing ONLY		2 Opata	\$2.55
2 Red Wing	\$2.55	2 Sapa/Ch. Plums	
2 Underwood			

BUY ALL 4 GROUPS FOR ONLY \$10.00 AND GET FREE

1 Beacon Apple Tree (New) and 1 Alderman (NO. 1007) Apple Tree

These are all 2 year old trees grafted on the whole root which insures longer life. 30 trees for \$10.00

SPRING 1938 PRICE LIST

From The

SWEDBERG NURSERY BATTLE LAKE, MINN.

SOME REAL FRONT PAGE BARGAINS

SIBERIAN PEA-TREE
(Caragana)
100 6-10in. 90¢
100 8-12in. \$1.25
ALL POSTPAID
In U.S.A.

SIBERIAN ELM
Hardy (Chinese)
ALL TRANSPLANTED
10 2-3ft. \$1.35
POSTPAID
4 3-4ft. \$1.00
POSTPAID in U.S.
Nice straight trees

HARDY PLANTS
1 Bleeding Heart
3 Peonies (Red, white
and pink) \$1.00
1 Baby's Breath FREE

3 Newer APPLES
1 ANOKA 2/3
1 HARALSON 2/3
1 ALDERMAN \$1.00
No. 1007 POSTPAID

Sec. 562 P, L & R
U. S. POSTAGE
PAID
Battle Lake, Minn.
PERMIT NO. 1

U. S. DEPARTMENT OF AGRICULTURE,
WASHINGTON, D. C.

BUREAU OF PLANT INDUSTRY
Fruit and Vegetable Crops and Diseases
M. R. N. 8-3591

RETURN POSTAGE GUARANTEED

GRAPES SMALL FRUITS RASPBERRY

BETA- The standard black grape for this section. Medium size blue-black fruit. Early. It is very hardy. Learn to prune your vines 25¢ each; 5 for \$1.00 2 & 3 yr. old.

CACO- New Red Grape of high quality. Early and very desirable. 30¢ each; 5 for \$1.35

FREDONIA- Early dark blue grape of large size for table use. Juicy & solid. 30¢ ea.

2&3 yr. old **GOOSEBERRY** offered here.

NOTICE: If you live in one of the following Minnesota Counties, we cannot ship you any Currants or Gooseberries until we have secured a permit from the State. Customers living in this BLISTER RUST CONTROL AREA must give LEGAL DISCRPTION of their land when ordering these plants) WHERE THESE PLANTS WILL BE PLANTED: 1. Chisago-2. Isanti 3-Kanabec.4-Pine.5Carlton.6-Aitkin.7-Cass. 8-Cook.9-Lake.10-St. Louis.11-Koochiching. 12-Itasca. 13-Crow Wing. 14-Hubbard. 15-Decker. 16-Mahnomen. 17-Clearwater.18-Beltrami.

CARRIE- It is an exceptional fine berry and very productive. 25¢ each; 3 for 65¢

COMO- A Minn. plant of high qualities. Very good size and heavy bearer.35¢ea.;3 , \$1.00

GLENDALE- New York Variety. Hardy. 40¢ each

RED JACKET- Very large berry; grand for eating in any form. 2yr. 25¢ 3yr. @ 35¢

PIXWELL- A Prof. Yaeger, Fargo,N.D. Agricul. College introduction. Hardy and strips off very easily- Med. 25¢ ; 2 yr. @ 50¢

2& 3yr. OLD **CURRANTS** OFFERED-Only

PERFECTION- A very good size currant with outstanding productivness. 25¢; 5 for \$1.00

RED LAKE- A Minn. introduction. Largest and best for all around use. 35¢ each; 3, \$1.00

WHITE GRAPE CURRANT-We have it @ 25¢

-----Grapes, Gooseberries and Currents above in 2yr.25¢ea.; 3 for 65¢ can be had also in 3 yr. 35¢ ea.; 3 for \$1.00-----

RHUBARB

MAMMOTH RED- Very large and juicy variety.....3 of these

VICTORIA- Another good large red variety.....3 of these **6 for \$1.00**

NEW RUBY- Dark red flesh and stalks; no need to peel; makes a wonderful red sauce.

NEW McDONALD- The largest; juicy red stalks

--RUBY AND McDONALD are both originated at the experiment station in Canada. They are worth the difference. 40¢ ea.; 6 for \$2.25

COMMON SORTS- 10¢ each.

ASPARAGUS- Mary Washington

Fresh dug for your order: per

25	50	100
2 year old strong plants..	50¢	.90 \$1.70
3 year old heavy plants...	75¢	1.40 1.95

CHIVES (Or Sweddish;Gräss Lök)Cut up for salads etc. Nice rock plant.15¢; 3for 40¢

HORSERADISH- Strong roots 15¢ each

BERMUDA ONION PLANTS

CRYSTAL WAX and YELLOW Varieties.

These are thrifty field grown plants and will reach you in good sound condition. These will grow into Large sweet and tender Onions that will bring top prices to you. Frost or light freezes will not injure them.

1000 PLANTS POSTPAID FOR- **25¢**

500 PLANTS POSTPAID FOR **80¢**

1000 PLANTS POSTPAID FOR **\$1.40**
500 PLANTS F.O.B. HERE ARE 65¢

LATHAM (NO.4) A Minn. berry that is still the best all around raspberry grown. Large red fruit of grand flavor.

THE NEW CHIEF-(NO.223)latham offspring . For those who want berries about 10 days earlier than Latham for better market prices plant the New Chief.

LOW PRICES

	25	100	500
Standard grade.....	90¢	\$1.80	\$7.50
Heavy bearing Size..	\$1.15	2.80	12.50

NOTICE; These PRICES are \$1.00 or more below current prices. Light grade not listed.

CUMBERLAND BLACK CAP RASPBERRY- It makes grand (purple colored) jam. Plant some. 1yr.Heavy rooted-25 for \$1.00; 100 for \$3.00

EVERBEARING STRAWBERRIES

NEW SCARLET GEM All who have grown it like its size and firm texture. Being a Progressive offspring it is sweet and of a fine flavor. Sets runners quickly and bears on new plants in fall.

Prices; 25 for 65¢; 50 for \$1.00 and 100 for \$1.60 POSTPAID Gem, Mastadon & Progressive

Expres COLLECT--500 for \$6.00; 1000, \$12.00

PROGRESSIVE- A firm sweet berry. Hardy.

MASTADON- A great berry with qualities all its own. Try this improved everbearing.

JUNE BEARING STRAWBERRIES

SENATOR DUNLAP- True strain; one of the best old standbys. It is the best money making June bearer. Find large fruit.

25 plants for 50¢ ;50 for 80¢; 100 for \$1.25 POSTPAID.Exp. Vol. 500 for \$3.50

FAIRFAX- A really fine New June bearer. Excellent flavor with bright red color.

A heavy producer for home and commerce.

DORSETT- Good strong grower. Fine flavor.

FAIRFAX & DORSETT PRICES; POSTPAID

25 plants 60¢; 50 for 90¢; 100 for \$1.50

Express Collect--500 for \$4.50; 1000, \$8.50

SPECIAL STRAWBERRY OFFER

ALL LABELED

25 Sen. Dunlap	.50	25 Scarlet Gem	.65
25 Fairfax.....	.60	25 Progressive.	.65
25 Dorsett60	25 Mastadon....	.65
75 June BEARING	\$1.70	75 Everbearing	\$1.95

150 PLANTS postpaid FOR ONLY \$2.30

Oct. 9, 1937-The order arrived in perfect condition. We are very much pleased with all the plants and thank you for your generosity. They are just in time for fall planting. Mrs. Leif Strand Anchorage, ALASKA

GARDEN ORCHARD

SUCH AS WE WOULD PLANT AND RECOMMEND FOR NORTHERN SECTIONS

3 Perfection Currants.....	\$.65
2 Red Lake Currants.....	.70
3 Red Jacket Gooseberry.....	.65
25 Latham Raspberry.....	.90
50 Scarlet Gem Everbearing StrWB	.85
50 Sen. Dunlap June " Strawberry	.65
1 Anoka Apple. (Will bear '39)4/5'	.55
1 Opaté Plum (Bears now)'38 4-5ft.	.55
1 Alderman (No. 1007)Apple 3-4ft.	.50
1 Underwood (Perfect Plum) 4-5ft.	.55
137 Plants	Total Value.....\$3.55

BARGAIN PRICE Supply Limited \$4.95

WINDBREAK TREES ORNAMENTAL

ASH GREEN - BUY 50 trees @ 100 rate 1000 @ 500 rate

Seedlings	Size	Each	10	100	500
"	9-12in.	...	1.25	12.50	62.50
"	12-18in.	...	1.50	15.00	75.00
"	20-26in.	...	2.00	20.00	100.00
Transplanted	2-3 ft.	1.10	11.00	55.00	275.00
"	3-4ft.	20¢	2.00	20.00	100.00
"	5-6ft.	45¢	4.50	45.00	225.00

HORSE CHESTNUT (BUCHYEY) One of the hardiest, longest lived ornamental trees. White flowers and brown nuts.
 5-6ft. \$1.25 6-8ft. \$1.75 8-10ft. \$2.00
 Cute little 12in. trees for 25¢
HACKBERRY - Native; therefore 100% hardy. Plant more of these around your home.
 18-24 in. S'Dl's \$3.50 per 100
 2-3 ft. Transplants 20¢ each; 50 for \$9.00

The GREEN ASH has proved itself the most hardy and drought resistant windbreak tree.
COTTONWOOD The fastest growing tree.
 3-4 ft. ... 1.50
 4-5 ft. ... 5.00
 5-6 ft. ... 1.95 15.00
 6-8 ft. ... 3.00 25.00

MOUNTAIN ASH - Large white clusters of flowers in June followed by bright orange red berries which weight down the branches.
 5-6ft. \$1.10 6-8ft. \$1.40 8-10ft. \$1.75

ELM AMERICAN-SIZE

Seedlings	Size	Each	10	25	100	500
"	12-18in.50	1.50	5.00	15.00
"	18-24in.70	2.00	9.00	27.00
"	2-3ft.	...	1.10	3.00	12.50	37.50

WELL ROOTED TRANSPLANTS

18-24in	.60	1.00	3.00	10.00
2-3 ft.	.80	1.75	6.00	
3-4 ft.	1.00	2.50	8.00	

Specimens for 6-8 ft. 85¢ each; 2 for \$1.60
 Boulevard... 8-10 ft. \$1.25 " ; 2 for 2.40
 Trunk caliper 1 1/4 - 1 1/2 in. 1.50 " ; 2 for 2.80

POPLAR Lombardy - Upright growing tree with gossy green leaves. Fast grower.
 5-6ft. 45¢ ea. 10 for \$4.00
 6-8ft. 75¢ ea. 10 for \$7.00
POPLAR BOLEANA - Upright grower like Lombardy with beautiful silver leaves and light green bark. For corner accents.
 4-5ft. 10 5-6ft. 10 6-8ft. 10 8-10ft. 50¢
 \$4.50 60¢ \$5.75 \$.85 \$1.25 each.
 These are all well transplanted trees.

HARDY SIBERIAN ELM

PLANT THESE FOR WINDBREAK PLANT THESE BETWEEN DEAD TREES AND FOR SCREENS ETC. PLANT THESE IN THE LAWN OR STREET.

SIZE	Per 10	25	100	500
12-18in.	—	.50	\$1.50	\$6.00
18-24in.	—	.75	2.10	9.50
2-3 ft.	.65	1.00	3.25	12.50
3-4 ft.	1.10	1.50	5.90	21.00

All ABOVE SEEDLINGS ARE 2 yr.

On our black loam soil the Siberian Elm is perfectly hardy and the most drought resistant tree, fast growing tree we have EVER grown.

Well branched;
 Size Each 10 50
 2-3ft. 7¢ .75 \$3.25
 3-4ft. 12¢ 1.10 4.50
 4-5ft. 20¢ 1.90 8.00
 5-6ft. 40¢ 3.75 17.50
 6-7ft. 60¢ 5.75 Trimmed

A BARGAIN
 IF THERE EVER WAS ONE
 all transplanted

nicer trimmed specimen trees than in this lot this year.
 SIZE Each per 2 10 50
 2-3ft. 15¢ .23 \$1.25 \$5.50
 3-4ft. 25¢ .45 2.25 10.00
 4ft. 30¢ .55 2.75 *Sturdy*
 4-5ft. 35¢ .65 3.25 15.00
 5-6ft. 50¢ .95 4.50 ...
 6-8ft. 90¢ 1.75 ...
 8-10ft. 1.25 Each
 8-10ft. 1.50 Each - Selected Transplanted Specimens

BIRCH AMERICAN WHITE - Pure white bark. Transplanted 2-3ft. @ 25¢; 6-8ft. \$1.50
BIRCH - Cut Leaf Weeping - White bark; small finely cut leaves; Branches hang to ground.
 5-6ft. \$1.75 6-8ft. \$2.50 & 4-5ft. \$2.20
BLACK WALNUT - Perfectly hardy stately tree for beauty, edible nuts, and valuable wood.
 2-3ft. @ 25¢ ea.; 10 for \$2.00 TRANSPLANTED
 3-4ft. @ 30¢ ea.; 10 for 2.50 TREES.

POPLAR Simon - Similar in growth to Lombardy and Boleana. Fast growing with slender upright compact branches. These grew fine in 1936 without watering. Hardy.
 5-7ft. 75¢ ea. 10 for \$7.25
 8-10 ft. \$1.00 ea. 10 for \$9.50

BASSWOOD or Linden - Beautiful large leaves A fast growing tree for perfect shade.
 5-6ft. \$1.20 each 6-8ft. \$1.50 Each.
SOFT OR SILVER MAPLE - Fast growing windbreak
 12-18in. seedlings \$1.50 per 100
TRANSPLANTED TREES.
 2-3ft. 15¢ ea. 50 for \$7.00
 3-4ft. 20¢ ea. 25 for \$4.75
 4-5ft. @ 30¢ and 5-6ft. @ 40¢ - Low branched.

NORWAY POEAR AND GOLDEN WILLOW
CUTTINGS - 100 for 50¢; 500, \$2.00; 1000 \$3.75
W - Golden and Laurel 2-3ft. trees \$3.75
J - MORE WEEPING - Perhaps the best weeping tree. Golden bark; shiny leaves.
 6-8ft. \$1.00 8-10ft. \$1.25 5-7' 80¢
L - Wisconsin Weeping - Green bark. A good tree for the low price.
 6-8ft. 75¢ each; 8-10ft. \$1.00 ea.
W - HARD MAPLE - Fall foliage coloring
S - Slow growing. Nice shape. 4-5ft. 75¢
 8 ft. \$2.00

ORNAMENTAL HEDGING SHRUBBERY

BARBERRY Thunbergi - Green leaved bush growing about 3 ft. high. Colored fall foliage with bright red berries hanging late.
SIZE Each per 10 25 100
 9-12in. ... \$1.25 \$2.25 \$8.00 2yrs. old
 12-18in. 25¢ 1.50 3.75 12.00 3 yr. old
 18-24in. 40¢ 3.75 Shrubs
BARBERRY Atropurpurea - Red Leaved variety. Contrasts with other shrubs. 12-18in. 50¢

COTONEASTER Pronounced - Cot-tōn-ē-ās'ter
 Visitors on our grounds pronounce this the most attractive hedge. Dark shiny green leaves early in spring. Small pink honey flowers followed by black berries for the birds. Makes a soft hedge or shrub. 100% hardy and very resistant to heat. 1 1/2 ft. apart
SIZE Each per 10 25 100 2 1/2 ft.
 9-12in. 6¢ \$0.60 \$1.50 \$5.50 Shrubs 35¢
 12-18in. 15¢ 1.40 3.25 12.00 13 for \$1.00
 9-12in. 10¢ 1.00 2.00 7.50 heavy
 12-18in. 25¢ 2.25 5.25 20.00 - Plants

CURRANT ALPINE - The best for low hedges around 1ft. high.
 9-12 in. 25¢ each; 10 for \$2.00; 100, \$16.00
 This hedge is 100% Hardy. Plant it!!!

SHRUB **HEDGING** CONT. 3
WINDBREAKS, SNOW CATCHES, & SCREENS

CARAGANA SIBERIAN PEA TREE

A DROUGHT RESISTANT and RABBIT PROOF plant for WINDBREAK or HEDGE. Grows over 15ft. The government recommends it highly for snow catch. The first shrub to green in the spring. Attractive yellow pea-flowers in May-June. Our greenest, thickest, shrub.

SIZE	Each	per 10	25	100	500
S'dl'ngs 6-10in.25	\$1.00	\$4.00	
" 10-12in.25	.50	1.40	5.75
" 12-18in.40	.75	2.00	9.00
Ex. Sturdy-20-24in.45	.95	2.95	14.00
Ex. Sturdy-2-3 ft. 10¢60	1.25	4.50	20.00

TRANSPLANTED SHRUBS

2-3 ft. Shrubs @ 20¢ \$1.75 for 10
 3-4ft. Shrubs @ 30¢ \$2.50 for 10; 3¢70¢
 4-5ft. Shrubs @ 35¢ \$3.25 for 10; 3¢\$1.00

HONEY SUCKLE Makes a fine hedge; some 15ft. high untrimmed as snow-catch. 100% hardy and drought resistant. This one hedge size AT SPECIAL LOW PRICE 2-3ft. 15¢ ea.; 50 for \$6.50; 100, \$12.00

LILAC Common Purple- Ornamental.

Size	Each	10	50
12-18 in. 12¢		\$1.10	\$5.00
18-24 in. 18¢		1.50	7.00
2-3 ft. 20¢		1.95	8.75

BUCKTHORN Catharticus-Common-

Heavy dark green leaves hang late into the fall. Makes a STIFF, STURDY HEDGE. 100% Hardy. Birds go for the black berries. Will stop intruders with its hard pricks.

SIZE	Each	10	25	100
9-12in.	.95	\$1.25	\$4.00	
12-18in. 12¢	1.10	2.00	5.50	
18-24in. 15¢	1.35	2.50	7.50	
2-3ft. 20¢	1.75	3.25	12.00	
3-4ft. 25¢	2.25	4.75		
4-5ft. 35¢	3.25	6.75		

EXTRA HEAVY- 3-4ft. 30¢ ea. 3 for 80¢
 4-5ft. 45¢ ea. 3 for \$1.00
 5-6ft. 75¢ ea. 3 for \$2.00

SPIREA VAN HOUTTIE-Makes informal hedge.

See shrubs on next page.	Size	Each	10	25	100
	12-18in. 15¢	\$1.00	\$2.00	\$3.00	
	18-24in. 20¢	\$1.75	2.75	10.00	

RUSBIAN OLIVE. 18-24in.75 1.25 5.00
 Shrubs 2-3ft. 20¢ each; 3-4ft. 35¢
 3 for \$1.00; 4-5ft. 45¢ each

10000 SIBERIAN ELM SEED 25¢ Postpaid.
 250 FT. HEDGE FROM CARAGANA (Siberian Pea Tree) Seed 25¢

ORNAMENTAL FLOWERING SHRUBS

CRANBERRY, High Bush- Large clusters of white flowers followed by red berries which make the best jam you ever tasted. 18-24in. 30¢ each 3 for 80¢

GOLDEN NINEBARK (Spirea)- White spirea-like flowers in June followed by very attractive red seed pods. Yellow foliage. Grows tall. 18-24 in. @ 25¢ each; 2-3ft. @ 35¢ each.

ELDER GOLDEN- Fine for contrast with green shrubs. Large white flower clusters and black fruit. 2-3ft. 35¢ ea.
ELDER, Cut Leaf- Beautiful foliage. 2-3ft. 45¢
ELDER, Common- Medium height. 3-4ft. @ 35¢

HONEY SUCKLE MORROWI- White Spreading growth.
 " Tartarian- Pink; upright grower.
 2-3ft. @ 30¢; 3 for 80¢; SEE HEDGING
 3-4ft. @ 35¢; 3 for \$1.00
 4-5ft. @ 45¢; 3 for 1.25
 Tartarian Rosea- Red flower. Add 10¢ Each

HYDRANGEA Arboresens-Snowhill or Hills-of-Snow. Large white rather flat headed fls. in July
HYDRANGEA, PeeGee- Blooms August until frost with large cone-shaped flowers of cream shading to bronze and pink. Cut and dry them.
 Hydrangea PRICES; 12-18in. @ 30¢; 5, \$1.40
 18-24in. 45¢ each; 3 for \$1.25
 LILAC, common purple- See hedging above.

LILAC PERSIAN PURPLE- Deep purple flowers in May. Slender graceful branches and small leaves. Does NOT sucker from root.
 18-24in. 30¢ ea.; 3 for 75¢
 2-3ft. 40¢ each; 3-4ft. 50¢ each

LILAC, Villosa Late- Pale pink blooms out in June. Attractive seed pods last all year. Heavy branched with thick leaves. No suckers.
 2-3ft. Light 25¢ each; 3 for 65¢
 3-4ft. 45¢ each; 4-5ft. 60¢ each.

FRENCH LILACS-Chas. X Purple red. 18-24" 75¢
 Ask for other varieties; we may have ...

MOCKORANGE, Coronarius- Very fragrant white flowers which are larger than common sorts. 2-3ft. 40¢ each; 3-4ft. 45¢ each.

MOCKORANGE VIRGINAL
 We cannot brag about this shrub too much. All visitors who see it in bloom want it for sure. Double and semi-double flowers in June-July and again first of Sept. until frost. Almost perpetual bloomer. Flowers white; height 5ft. 2ft. 30¢ each; 3ft. 40¢ each; 4ft. 50¢

3 HARDY PRUNUS

Prunus Japonica; Japanese Cherry- We are introducing this shrub for the first time this yr. Compact bush about 5ft. high. Blush rose flowers appear with leaves. Wine-red round fruit hang to shrub late. High fall foliage coloring. 18-24in. 30¢; 3 for 75¢ 2-3ft. 40¢; 3, \$1.00	Prunus Triloba FLOWERING PLUM or Rose Tree of China Double pink rose fls. along stem before the leaves appear. The most showy shrub when in bloom. A HARDY FLOWERING ALMOND- 3ft. 50¢; 4ft. 60¢
--	---

PRUNUS Virginiana-Hybrid Chokecherry - A most fragrant white bloom early in May and Called the MAY DAY TREE. 3-4ft. 50¢

SNOWBALL Viburnum Sterilis)
 The old fashioned lawn shrub. White round flowers in June.
 12-18in. 25¢ ea. ; 3 for 65¢
 18-24in. 35¢ ea. ; 3 for \$1.00

SUMAC- Fern Leaf- Finely cut attractive leaf. Otherwise like common. 2-3ft. 40¢
 SUMAC- Common- Bright red fall coloring in leaves and fruit. 2-3ft. 30¢; 3 for 75¢

SIBERIAN ALMOND Hardy shrub about 2-3ft. high. Mass of pink flowers May 10 Earliest to bloom. Very snowy 25¢ each.

FLOWERING SHRUBS

all hardy here.

SPIREAS

L.H. Bailey's Cyclopedia of Horticulture lists and describes about 86 Species and their varieties of SPIREAS. Here are 7 best.

ANTHONY WATERER- Red flowers in flat heads from July until frost. Low 2-3ft. shrub. 12-15in. 25¢ each; 15-18in. 30¢ each
5 for \$1.10 3 for 80¢

FROEBEL- Similar to Anth. Waterer. Pink flowers in July. Grows 3ft. high. Hardy 18-24in. 35¢; 3 for \$1.00

APGUTA- (Snow Garland) Pure white flowers along upper stems one week before VanHouttei Very fine leaves. Graceful. 3ft. for 40¢.

BILIARDI- Pink flowers in 4-6in. spikes first of July. Grows 5ft. 3-4ft. 30¢ each

THUNBERGI- Grows 3-4ft. high. The FERN LEAF Spirea. Very graceful light green foliage sprays. Not so much for its flowers here. Our LARGE SUPPLY allows us to move them at THIS LOW PRICE; 2-3ft. 30¢ ea.; 3 for 80¢ 5 for \$1.25; 10 for \$2.25 A BARGAIN!!!

NEW KOREAN- Blooms one week later than Van Houttie. Similar fls. but cream color. Seed pods conspicuous. 3ft. 50¢ ea.; 4ft. 60¢; trial

VAN HOUTTIE BRIDAL WREATH (so called) 20¢ White flower clusters cover branches first part of June. A beauty in any yard.
SEE HEDGING SIZES, PRECEDING PAGE.
2-3ft. 25¢ each; 3 for 65¢; 5 for \$1.10
3-4ft. 30¢ each; 3 for 85¢; 5 for 1.30
4ft. 35¢ each; 3 for \$1.00

LANDSCAPE YOUR HOME

WITH OUR HARDY NORTHERN SHRUBS

The following 12 shrubs are chosen for their HARDINESS and then for their blooming period and color arrangements:

Key Qua.	Name	Size	\$
1....2..	Spirea Van Houttie, White	3ft.	50
2....2..	Spirea Thunberg	2ft.	60
3....2..	Spirea Anthony Waterer, Red	1-1 1/2	50
4....1..	Honeysuckle, Pink	2-3ft	30
5....1..	Villosa Late Lilac, Lavender	2ft.	25
6....1..	Snowball, White	1 1/2 ft.	35
7....1..	Cotoneaster, Red	2ft.	35
8....1..	Prunus Japonica, Rose	2/3ft	40
9....1..	Golden Elder	2 1/2 ft.	35

12 Medium Size Shrubs ONLY \$2.95

BARGAIN! PREPAID Total Cost \$ 3.60

VINES

AMERICAN IVY- (Virginia Creeper) One of the fastest growing to cover fences, porches, pergolas etc. Hardy twinner. 25¢; 3 for 65¢

BITTERSWEET- Orange-red berries which are nice house decoration. It twines around for support. 35¢ each; 3 for \$1.00 *LARGE*

ENGLEMAN IVY- Clings to stone and stucco etc. by small tendrils. Large heavy foliage and 100% hardy. Grows fast. 25¢; 3 for 65¢

SCARLET TRUMPET VINE- Long red trumpet flowers. Honeysuckle-like foliage. Very showy and desirable. 25¢ ea. 3 for 65¢

BOOKLET CONSTRUCTION OF LILY POOL AND ROCK GARDEN.

A very timely and well illustrated booklet which is too low priced to be without. 15¢ each Postpaid.

WATER POPPY- Large 3in. yellow flowers all summer. Round floating leaves. 15¢ Each.

WATER HYCINTH- Floats on water. Feather-like roots where fish will spawn. Should have it for the fish. 3 large plants 35¢

* * * * * CROOKSTON, Minn. 7/29/37- ...The trees and shrubs we bought from you are doing just fine. Mrs. C. to Hoppe * * * * *

SORBARIA Sorbifolia (Ash Leaved Spirea) has 4-6in. white flower spikes in July. Decidedly the first shrub to green up in the spring. 12-18in. 20¢; 3-4ft. 40¢ each

VIBURNUM Lantana (Wayfaring Tree) Of the Snowball family A shrub for the shade- White flowers heads in June; attractive berries (red, then black) Heavy dark leaves; grey underneath. 2-3ft. 40¢ each; 3-4ft. 50¢ each.

TAMARIX- Some would not be without this perennial-like shrub. Feathery foliage & occasionally flowers here. 25¢ each

NORTHERN ROSES

PRICES; 3 yr. old 45¢ each; 3 for \$1.25 Also smaller and heavier grades noted.

AGNES- Shrub type; double yellow flowers. Conrad F. MEYER- Best large pink.

F. J. GROOTENDORST- Blooms all summer with double red roses in clusters. A dwarf rose of ESKIMO type. Also 2yr. 35¢ ea.; 3, \$1.00

GRUSS EN TEPLITZ- QUITE HARDY TEA. The nicest red cutting rose. Velvety red.

HANSA SHRUB ROSE- Double red roses in June and in fall until frost. Grows 6ft. high. Large red fruit hangs to shrub. 100% Hardy.

2yr. old 35¢; 3 for \$1.00 2-3ft. 65¢ ea.

HARRISON YELLOW- Bright medium size double yellow fls. in June. We like it best. 2-3 shrubs for 65¢ each. Regular grade 45¢

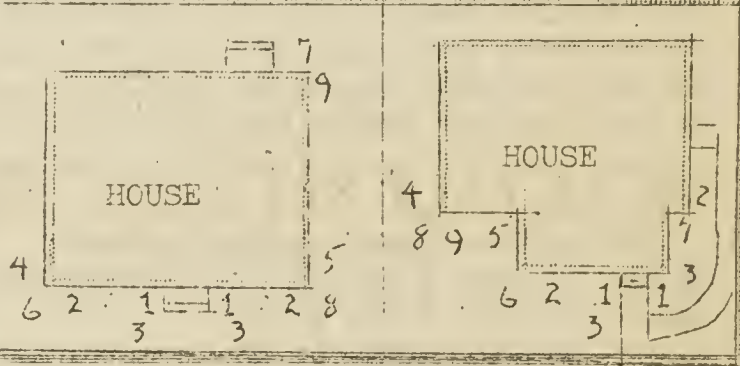
PERSIAN YELLOW- Large yellow roses in June.

SIR THOMAS LITTON- Best Hardy White.

DR. ECKNER- MOST BEAUTIFUL, FRAGRANT, HARDY Rose. Rosy red with yellow shadings to edge

AUSTRIAN COOPER- Petals a bronze red inside and bronze yellow outside. Very showy. Single. 2-3ft. 3yr. old ONLY @ 65¢ each. NEW!!!

EXCELSA- Best dark red HARDY climber. 35¢



WATER LILIES

GONNERE- Pure white double flower. The most perfect of all lilies. Each \$2.00

GLORIOSA- Brilliant red; semi-double often 7 inches across. This is a very showy lily; much loved. Each \$1.75

CHROMATELLA- Sulphur yellow with broad petals. Each \$1.25

PAUL HARIOT- Clear yellow suffused with rose changing to peach and orange. Later, red. Ea. \$1.25

EMILY GRANT HUTCHINGS- Night blooming lily of great merit. Large cup-shaped amaranth-pink flowers. For evening color plant this. Each \$2.00

PLANTS LILY POOL

ARROW HEADS- Arrow shaped leaves and white flowers. Bulbs 15¢ each; 3 for 35¢

CATTAIL- Sword like leaves and flower catkins of brown cylindrical spadix. A hardy plant. 15¢ each; 3 for 35¢

10 VEGETABLE SEEDS FLOWER

This seed is POSTPAID in the U.S.A. Besides bulk seed, we have it in pkts. 5¢ each We handle FERRY'S SEED in DATED 5¢ pkts. We handle only the BETTER varieties in bulk

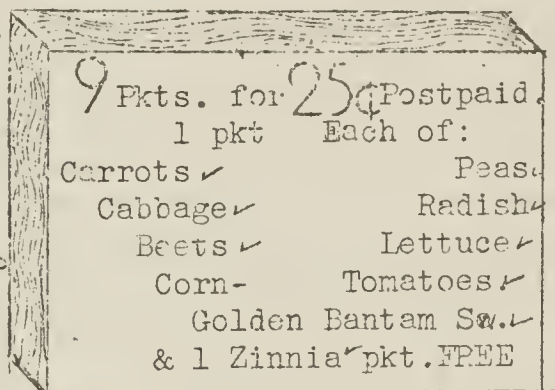
BEANS, Golden Wax & Pencil Pod Black Wax. Oz. 1 lb. 1 lb. 1 lb.	10¢	25¢	25¢
These are the earliest 50 to 55 days.	10¢	25¢	25¢
BEETS, Detroit Dark Red. Sweet & tender...	10¢	45¢	
CABBAGE, Early or Late Flat Dutch; Ballhead	20¢		
CABBAGE PLANTS in season; 10¢ doz. Winter C. 50¢ per 100.			
CARROTS, Danvers half long, Chantenay Red Oz. 1 lb. 1 lb. 1 lb.	10¢	25¢	45¢
Cored.	10¢	25¢	45¢
CORN, BANTAM Golden. Early & Sweet.....	10¢		30¢
" POP CORN- Japanese Hulless Dwarf Late	10¢		18¢
CUCUMBER, Early White Pine (60 days) 7 in.	15¢		30¢
National Pickling (50 days) Small pickles	15¢		30¢
LETTUCE, Early large Curled Leaf.....	10¢		
MUSKMELLON, Golden Champlain, Earliest			
orange or Rocky Ford, green type.	10¢		25¢
ONIONS, Red Globe or Yellow Danvers.....	25¢	1/2 oz.	15¢
PARSNIP, Guernsey or Best Hollow Crown...	10¢		25¢
PEAS, Premium Gem (52 days) Alaska (55 days)	10¢	15¢	25¢
PUMPKIN, Winter Pie (75 days)	10¢		
RADISHES, Scarlet Turnip, White tipped;			
and Icicle, long white radish...	10¢		30¢
RUTABAGA, Purple Top Turnip.....	10¢		25¢
SQUASH, Improved Hubbard, Winter var....	13¢	2oz.	25¢
TOMATOES, Avon Early (66 days) Best early.			
BONNY BEET (73 days) Smooth and firm.			
Marglobe (73) The best. & Yellow Pear. ..	35¢	1/2 oz.	20¢
Tomato Plants in Season. 2 doz. 25¢ (Seedlings).			
1 Doz Transplants 25¢ Potted 75¢ doz. F.O.B.			
SPINACH- 10¢ oz. Swiss Chard 10¢ oz.			
WATERMELLON, HONEY Dew, Best round sweet.	15¢		

1.00 SEED BARGAIN

1 lb. Gold. Wax Bean.... 18¢
 1 lb. "Bantam Sw. Corn. 10¢
 1 lb. Alaska Peas..... 15¢
 1 lb. Premium Gem Peas.. 15¢
 1 oz. Dt. Dark Red Beet.. 10¢
 1 oz. Radish..... 10¢
 3 pkts. Carrots. 15¢
 2 pkts. Onions..... 10¢
 1 pkt. Cabbage..... 5¢
 1 pkt. Cucumber (pickle) 5¢
 1 pkt. Lettuce 5¢
 1 pkt. Parsnips..... 5¢
 1 pkt. Spinach..... 5¢

Total Value... \$1.28
 Sent for only \$1.00 Post
 And 1 pkt. FREE Paid.
 HEAVENLY BLUE, Morning Glory.

MAMMOTH RUSSIAN SUNFLOWER, Heads are 12 to 20 inches in diameter. Will produce up to 1000 lbs. to acre. A very good feed for chickens etc. Large pkt. 10¢



9 Pkts. for 25¢ Postpaid.
 1 pkt Each of:
 Carrots ✓ Peas ✓
 Cabbage ✓ Radish ✓
 Beets ✓ Lettuce ✓
 Corn- Tomatoes ✓
 Golden Bantam Sw. ✓
 & 1 Zinnia pkt. FREE

ALL 6 PKTS of FLOWER SEEDS

25¢ POSTPAID and BLUE PRINT included

1. Blue Bachelor's Button
2. Early Mammoth Cosmos
3. Guinea Gold Marigold
4. White King Petunia.
5. Fine Mixed Portulaca
6. Giant Scarlet Zinnia

Each package contains a BLUE PRINT and enough seed for 12x4 ft.

2 GOOD ANNUAL VINES

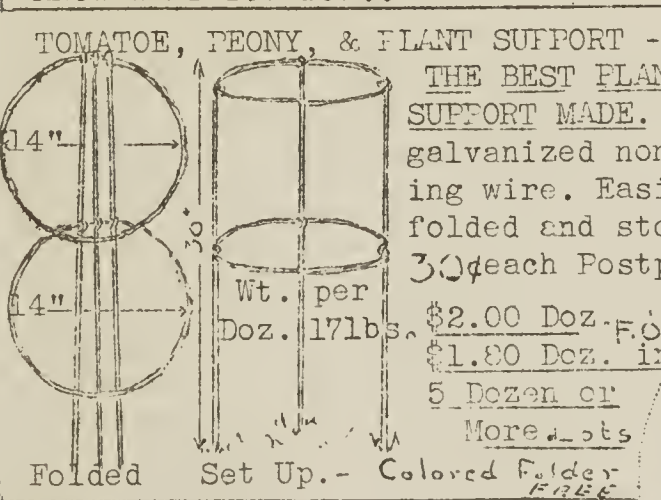
1 pkt. HEAVENLY BLUE Morning Glory 10¢
 1 pkt. CAL. HYCINTH BEAN- Sweet Pea like lavender fls. Deep red Pods. 10¢
 2 Pkts. One of Each for 15¢ POSTPAID

LAWN GRASS SEED

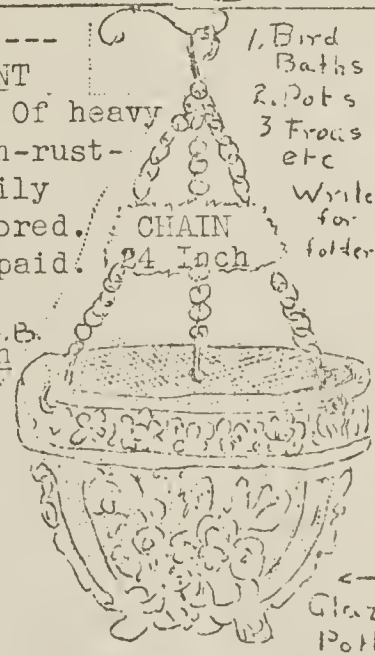
KENTUCKY BLUE GRASS	Per lb.	10 lbs.
Minnesota Grown	30¢	\$2.50
Fancy RED TOP. Fine for wet or sour soil.....	35¢	3.00
WHITE DUTCH CLOVER.....	1/2 lb. 30¢	45¢
RYE GRASS-Sprouts quickly.....	25¢	1.50

Seed LAWN SEED 8 lbs. to 1000 sq.ft. for a really good seeding. 5 lbs. per 1000 sq.ft. for average new lawns.

Best LAWN MIXTURE
 50% Blue Grass 15% Rye Grass 1 lb. 30¢
 30% Red Top 5% Clover. 10 lbs. \$2.70
 KNOW WHAT YOU BUY!! F.O.B. Here.



TOMATO, PEONY, & PLANT SUPPORT ----
 THE BEST PLANT SUPPORT MADE. Of heavy galvanized non-rusting wire. Easily folded and stored.
 30¢ each Postpaid.
 Wt. per Doz. 17 lbs. \$2.00 Doz. F.O.B.
 \$1.80 Doz. in 5 Dozen or More lots
 Colored Folder FREE



1. Bird Baths
 2. Pots
 3. Fosses etc
 Write for folder
 CHAIN 24 Inch
 Glazed Pottery

BERRY BOXES

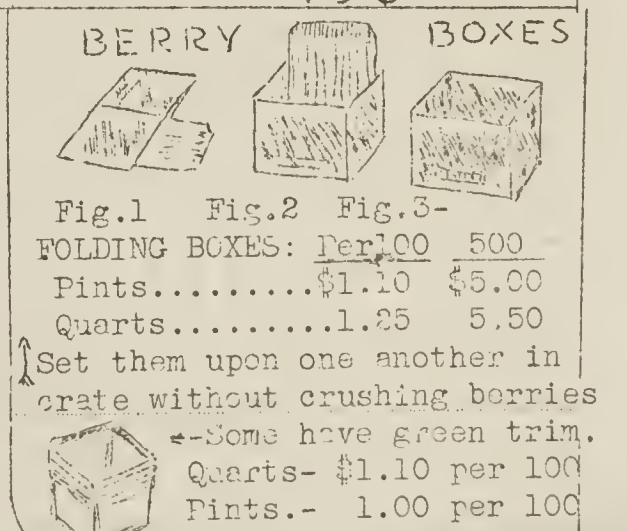


Fig. 1 Fig. 2 Fig. 3-
 FOLDING BOXES: Per 100 500
 Pints..... \$1.10 \$5.00
 Quarts..... 1.25 5.50
 Set them upon one another in crate without crushing berries
 Some have green trim.
 Quarts- \$1.10 per 100
 Pints.- 1.00 per 100

1000 SIBERIAN ELM SEED 25¢
 Enough SIBERIAN PEA TREE Seed (Caragana) 25¢
 To plant 250ft. HEDGE 25¢
 1 Pkt. Scopulorum Seed (Silver Juniper) 35¢
 1 Pkt. GOLD MEDAL HYBRID DELPHINIUM SEED 10¢
 Postpaid Prices in U.S.A. only

HANGING BASKET
 Burned in green color
 Nest Gold colored Chain
 7 in. 50¢ Each. Express
 8 in. 65¢ Each. Collect.
 Write for "Supplies"

MAKE YOUR OWN BERRY BOX

Ready cut lumber for stapling together at home in your spare time and to make a good low cost box.
 Lumber for 100 boxes 75¢
 Stapler with 1100 Staples for \$2.00
\$5.50
 For 500 BOXES & STAPLER

PERENNIAL FLOWERS FOR THE NORTH

THESE 15¢ PLANTS ARE ALL 2 and 3 YR. OLD PLANTS THAT ARE VICEROUS AND STURDY and FOR WHICH OTHER FIRMS ARE ACTUALLY GETTING 20 & 25¢

PRICES

15¢ EACH
3 for 35¢ 6 for 65¢
EXCEPTING CERTAIN PLANTS

ALL THESE FLOWERS WILL BLOOM FOR YOU THIS YEAR AND FOR MANY YEARS TO COME. SEE THE NEXT PAGE FOR SPECIAL FLOWER COLLECTION

All Plants Guaranteed

all strong blooming size

- Millefolium roseum (Rosy Milfoil)-Rosy pink flower heads on 18in. stems from July until October. Fine cut foliage.
- Parnassia (The Pearl) Pure white double flowers in June-July. Fine for the middle of the flower border.
- Tomentosa- Pure yellow flowers in dense heads 8-10in. high. A very good ROCK PLANT. 25¢ each; 3 for 50¢

COLUMBINE (Aquilegia) Mrs. Scott Elliott long-spurred strain comes in light reds and yellows etc. Hybrids strains come in dark blue, light blue, maroon and red colors.

CARNATION CRIMSON KING- That hardy NEW Carnation that blooms continually from May until frost. Deep red small flowers. A GEM for the ROCK GARDEN. 25¢ ea.; 3 for 65¢

COREOPSIS Our best yellow flower for the hardy flower border. Plant 3 or more.

DELPHINIUM GOLD MEDAL HYBRIDS: One of the hardiest Delphiniums. Does well anywhere and will give you a good assortment of color in powder blue, Pure blue, dark blue, orchid, & orchid blue with blue, white, brown, black, & orchid center bees. 15¢ ea. Order 12 for \$1.25 3 yr. old plants 20¢ ea.; 3 for 50¢

CHINESE DELPHINIUM- Pure blue petals and center bees- or pure white. Grow 2ft. high. FOR OTHER VARIETIES WRITE US. We grow 'em.

HOLLY-HOCKS Mixed singles and Assorted doubles in yellows, reds, scarlet, salmon rose, amaranth etc. Doubles are 15¢ ea.; 3 for 40¢; 6, 75¢

DAISIES SHASTA Alaska white daisy. A hardy flower for the middle of the flower border. 2ft. high. FALL DAISY (Uliginosum) Grows about 4ft. high with pure white flowers; Blooms Sept. until frost. 100% hardy and vigorous. PAINTED DAISY-(Pyrethrum) Finely cut foliage. White, rose, pink, & red colors.

LILIES 15¢ each 3 for 35¢
ELEGAN LILY- VERY HARDY. Orange-red upright flowers in later June on 1to2ft. stems.
COMMON TIGER- Orange-red black spotted flower. Grows over 3ft. tall.
DOUBLE TIGER- Flowers have more and narrower petals which curve back artistically.
NEW CHINESE (Philippine) Lily- Long white fragrant green-throated flowers similar to Easter Lily. Beautiful. 25¢ ea.; 3 for 65¢
REGAL LILY- Very fragrant white lily.
DAY LILY (Hemerocallis) Rich golden trumpet shaped flowers in July. Very hardy. We also have a DOUBLE DAY LILY; price. 20¢
LILY OF THE VALLEY- Small white bell-shaped lilies in corymbs. 6-10in. high. Very Hardy
ALL LILY BULBS 5in. circ. Giant bulbs 20¢

BLEEDING HEART THE DECORATION DAY FLOWER
They have never bloomed so nice as 1937 from May 29 until way out in June. We have some fine roots this year.
Strong 3 year old roots 35¢ each; 3, \$1.
Strong 2 yr. old roots 25¢ ea.; 3 for 65¢

BUTTERFLY BUSH A SHRUB, but treat it as a perennial plant. Most beautiful lavender purple spikes on 3 to 5 ft. stems. A very artistic plant. 25¢ each; 3 for 65¢

CANTERBURY BELL CUP AND SAUCER only Blue, pink, or white flowers loading the plant down in July.

GOLDEN GLOW For cut flowers these double yellow flowers are fine. Grow 5 to 7ft. tall.

GYPSOPHILA BABY'S BREATH Paniculata. Small white fragrant flowers cover the plant. Cut and dry for permanent bouquets. Rock Garden variety (Reopens) pink; 4" 20¢ each

GAILLARDIA Blanket flower- Flowers are shaded from yellow to bronze and brown.

HARDY GRASSES- Variegated Ribbon Grass is fine for rockeries. 2ft. leaves striped with cream and green. 10¢ ea.; 3 for 25¢

HEUCHERA Brizoides. Rock Plant. Carolbells- Pink flowers in corymbs on 2ft. stems. Cut and mix them in bouquets. A 30 clumps @ 25¢ ea.

IRIS GERMAN Varieties. We find these stand up in our climate.

GERTRUDE- The most hardy and vigorous of the better-than-average- Iris. A rich velvety-blue throughout. 5 for 50¢

LORD OF JUNE- Pale Lavender-Violet 15¢

SHER MAJESTY- Rosy Lavender-Pink 3 for

Mother of Pearl-Petunia violet 40¢

QUEEN OF MAY- Beautiful Rose. →

12 IRIS for \$1.00 POSTPAID } 4 Gertrude and 2 each of last 4

ALL POSTPAID PRICES ARE IN U.S.A. ONLY

LINUM Perenne **FLOWERING FLAX** A perennial flowering Flax with clear blue flowers most of summer on 18-24in stems. Flowers are brightest when cool.

OENOTHERA Caespitosa- Evening Primrose- A low growing Rock Plant with large white flowers most of summer & May-June. Order 3 or more and plant them at strategic points in rockery or flower border

PLATYCODON BALLOON FLOWER Large very showy cup blue flowers. Uncopened they resemble an inflated balloon. Very hardy. 2ft.

4 Or buy Best Newest DAHLIAS \$1.00 Postpaid Mrs. De Warren, Jersey Beauty, J. Beaton, Jane Cowli.

DINK CASHMAN CARD SUPPLY CO. 259 S. 3RD ST. ST. LOUIS, MO.

ENJOY THE FRESHNESS OF **EVERGREENS** ALL THE YEAR AROUND 9

THESE EVERGREENS ARE **B&B** BALLED IN THE MARTH AROUND THEM MAKING A SOLID BALL OF EARTH AND BURLAPED BY FASTENING BURLAP SECURELY AROUND THE EARTH TO HOLD IT.

COLORADO BLUE SPRUCE

This spruce withstands bad weather conditions better than most any. You all know the beautiful Blue Lawn Specimens.

SIZE	Blue-Green	Silver Blue
8-12in. B&B	\$.75	\$1.00
12-18in. B&B	1.25	3.00
18-24in. B&B	2.75	4.50
2-2½ft. B&B	3.50	5.00
2½-3ft. B&B	4.50	6.50
3-3½ft. B&B	5.00	7.50

BLACK HILLS SPRUCE

This spruce grows more narrow at the base than any other. It is very easily trimmed into high narrow specimens. Compact.

Size	Price Each	Per 3
12-15in. B&B	\$1.25	\$3.50
15-18in. "	1.50	4.25
18-24in. "	2.00	5.75
2-2½ ft. "	2.50	7.00
2½-3 ft. "	3.00	8.50

2&3yr. old EVERGREENS Per Seedling 100

AMERICAN ARBOR VITAE 4-6in.	\$5.00
DOUGLAS FIR.....6-8in.	7.00
MUGHO PINE.....3yr.	8.00
PINE PONDEROSA. Bull..4-6in.	6.50
Pine, SCOTCH4-6in.	5.50
PINE, White4-6in.	5.50
COL. BLUE SPRUCE.....4-6in.	8.00
NORWAY SPRUCE.....4-6in.	5.00
BLACK HILL SPRUCE....4-6in.	7.00
RED CEDAR, Juniper...3-4in.	5.00
SILVER JUNIPER.....3-4in.	6.50

25 of one kind and size @ 100 rate. BUT ORDER 4 kinds, 100 or more.

- No.1 Prostrate Junipers
- No.2 Savin & Pritzer Juniper
- No.3 Mugho Dwarf Pine
- No.4 Sheared Red Cedar etc.
- No.5 Regular Red Cedar
- No.6 Spruces



JUNIPERS ALL ARE BALLED & BURLAPED

- DUNDEE**- Good green pyramidal form of the upright Juniper. Very compact growth....2-3ft...\$3.00
- SCOPULORUM**- Silver Juniper. Pure Silver cast and does not loose its color. 18-24in. 2.00
2-3ft. 2.75
- VIRGINIANA**, Red Cedar Blue green. 18-24in. 1.70
juniper foliage. Most of them change 2-3ft. 2.50
color in the fall to brown shades 3-4ft. 4.00
The last 2 sizes are sheared to 4-4½ft. 4.50
- PRITZER**- Low spreading of blue-green 12-15in. 2.00
cast. Some will grow quite high, 5ft. 15-18 2.50
- SAVINS**- Low spreading to 3ft. high, 18-24in. 2.95
A good fresh green color. It 2-2½ ft. 3.75
stands the winters fine. Same 4-5ft. 5.50
prices as Pfitzers except no 4-5ft. size

MUGHO PINE- Dwarf pine to plant near the doorway or on either side of walk. Bright green all the year around. It is 100% hardy hear. 10-15in. 2.00
24-30 in. Ea. \$3.50 15-18in. 2.50
30-36in. Ea. 4.50 18-24in. 3.00

SCOTCH PINE. A good tall growing hardy pine that grows fast. Very hardy and vigorous. 2-2½ft. \$1.50
PROSTRATE JUNIPER. -Grows not over 1ft. high. Makes a good green ground cover and fine fore ROCK GARDENS etc. 18-24in. \$2.00

TRANSPLANTED EVERGREENS

In a year or two you will buy these trees Balled and Burlaped at a very much higher price. Buy them now and grow them y'rself

X Means transplanted once.
XX Means transplanted twice.

	Size	Each	per 10
WHITE SPRUCE. XX	10-12in.	25¢	\$2.25
NORWAY SPRUCE X	10-12in.	20¢	1.80
COL. BLUE SPRUCE XX	8-10in.	30¢	2.50
MUGHO PINE X. Spread of 6in.		20¢	1.50
NORWAY PINE (Red) XX	10-12in.	25¢	2.25
SCOTCH PINE.....X	4-6in.	12¢	1.00
	X 6-8in.	16¢	1.50
PONDEROSA PINE ...X	6-8in.	16¢	1.50
JUNIPER, Savin ..XX	10-12in.	50¢	4.25
JUNIPER, Red Cedar XX	12-14in.	45¢	4.00
JUNIPER, Silver XX	10-12in.	25¢	2.00

ANY LETTERS REPRINTED ARE UNSOLICITED

Park Falls, Wisc. '36- Please send 12 Chinese Elms size 8-10ft. I ordered some of these last year and they are all in fine shape. By O.H.R. Electric Bakery.

Duluth, Minn 4/6 /37- The Chinese Elms and Spirea I got from you last year are all doing very well. Otto Hogan.

LETTERS COME FROM MANY PLACES IN THE UNITED STATES & ALASKA.

Postpaid Prices in U.S.A. only

WINDBREAK BARGAIN

- 100 Hardy Siberian Elm. 12-20" \$1.50 *
- 100 American White Elm. 12-20" 1.50 *
- 100 Green Ash.....12-20" 1.50 *
- 100 Caragana.....12-20" 2.00 *
- 400 Trees with a TOTAL VALUE of \$6.50 ✓*

400 TREES FOR ONLY---\$4.75*

Offer CLOSES as soon as one item is gone. 400 trees of any variety \$4.75 Excepting Caragana. These trees cost you only 1¢/Each.

*COTTONWOOD may be had for Caragana in 2-3ft.

DIRECTIONS FOR SPACING TREES

- Plant CARAGANA.....4 ft. apart in the row
- Plant Siberian ELM...6 ft. apart in the row
- Plant AMERICAN ELM...8 ft. apart in the row
- Plant GREEN ASH8 ft. apart in the row
- Plant SCOTCH PINE...16 ft. apart in the row

100 SPECIALS POSTPAID

- 2 Mugho Pine 3 Black Hill Sp. 4/6in. \$1.00
- 2 Red Cedar 3 Blue Spruce \$1.00
- 2 Silver Cedar 3 Scotch Pine \$1.00

- 10 SPIREA VAN HOUTTIE 1½ft. high \$1.00
- 10 The Hardy White EPIDALWREATH \$1.00

- 10 GOLD MEDAL HYBRID DELPHINIUM \$1.00
- 10 Strong 2yr. Blooming Size Only \$1.00